



EQUITY TITLE OF NEVADA

RELOCATION GUIDE

SOUTHERN NEVADA



**BERKSHIRE
HATHAWAY**
HomeServices

Nevada
Properties

The Tonnesen Team

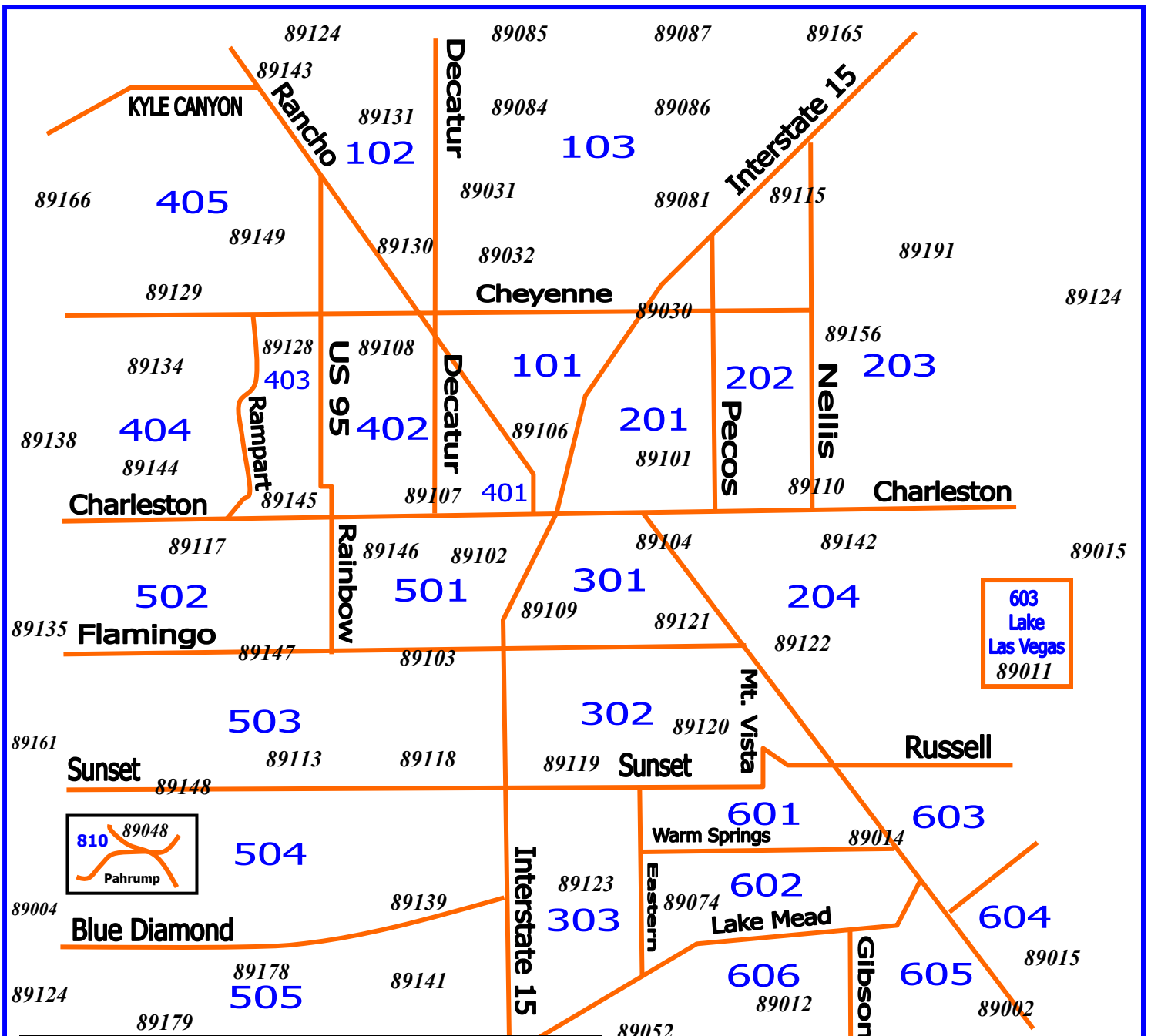


**Great Las Vegas
Homes**

702-919-5400

www.greatlasvegashomes.com

MLS Area Map



603
Lake
Las Vegas
89011

810 89048
Pahrump

Boulder City
702
US 93 701
89005

800 Mesquite	808 Laughlin
801 Muddy River (Moapa, Glendale, Logandale, Overton)	809 Other Clark County
802 Mt. Charleston/Lee Canyon	810 Pahrump
803 Indian Springs/Cold Creek	811 Nye County
804 Mountain Springs	812 Lincoln County
805 Blue Diamond	813 Other Nevada
806 Primm/Jean/Goodsprings	814 Amargosa Valley
807 Sandy Valley	815 Beatty
	900 Outside Nevada

WHY SOUTHERN NEVADA?

Population growth combined with great job potential, ensures the continued success SOUTHERN NEVADA has experienced well into the years to come. The industries in construction, manufacturing, durable and non-durable goods, wholesale and retail, education, housing, public administration and transportation exhibit the greatest employment potential in SOUTHERN NEVADA. With over 40 million visitors annually and more than 6.6 million conventioners coming to Southern Nevada, millions of dollars are pumped into our local economy.

As the steady growth of Southern Nevada continues, the economic future through the next decade is quite strong. With no signs of slowing down, more and more people from all over the country are calling Southern Nevada home.

Southern Nevada offers:

- Low cost of living
- Low property taxes
- No State income tax
- An exceptional economic growth outlook
- Museums and Art Centers
- Over 40 golf course
- Lake Mead
- Red Rock Canyon

AVERAGE DAILY TEMPERATURES

Month	High	Low
January	60	39
February	64	42
March	73	49
April	80	54
May	90	64
June	101	73
July	105	79
August	103	77
September	96	70
October	82	58
November	69	46
December	58	36

Source: NOAA

SOUTHERN NEVADA COMMUNITIES

Southern Nevada's largest cities, **Las Vegas**, **Henderson**, **North Las Vegas** and **Boulder City**, are located in Clark County. While within close proximity to one another, each city is fully independent. The most recent U.S. Census figures put Clark County's population at about 2 million residents.

Laughlin is located 90 miles south of Las Vegas and is situated on the banks of the Colorado River.

Mesquite is located approximately 80 miles north of Las Vegas and is a growing as a favorite get away destination for many Las Vegans.

Mount Charleston is located 35 miles northwest of Las Vegas and offers snow ski, mountain sports and hiking trails.

Pahrump is located 50 miles west of Las Vegas and offers several major housing developments.



TOURISM & CULTURE

The primary drivers of the Las Vegas economy are tourism, gaming and conventions, which in turn feed the retail and restaurant industries.

Tourism

The major attractions in Las Vegas are the casinos and the hotels, although in recent years other new attractions have begun to emerge.

The center of the gambling and entertainment industry is the Las Vegas Strip, outside the city limits in the surrounding unincorporated communities of Paradise and Winchester in Clark County. The largest and most notable casinos and buildings are located there.

Downtown Las Vegas offers The Fremont Street Experience and Fremont which offers bars to be closer together, similar to the Gaslamp Quarter of San Diego, the goal being to attract a different demographic than the Strip attracts.

Culture

The city is home to several museums, including the Neon Museum (the location for many of the historical signs from Las Vegas's mid-20th century heyday), The Mob Museum, the Las Vegas Natural History Museum, the DISCOVERY Children's Museum, the Nevada State Museum and the Old Las Vegas Mormon State Historic Park.

The city is home to an extensive Downtown Arts District, which hosts numerous galleries and events including the annual Las Vegas Film Festival. "First Friday" is a monthly celebration that includes arts, music, special presentations and food in a section of the city's downtown region called 18b, The Las Vegas Arts District. The festival extends into the Fremont East Entertainment District as well.

The Thursday prior to First Friday is known in the arts district as "Preview Thursday." This evening event highlights new gallery exhibitions throughout the district.

The Las Vegas Academy of International Studies, Performing and Visual Arts is a Grammy award-winning magnet school located in downtown Las Vegas.

The Smith Center for the Performing Arts is situated downtown in Symphony Park. The world-class performing arts center hosts Broadway shows and other major touring attractions, as well as orchestral, opera, ballet, choir, jazz, and dance performances.

Las Vegas is also known as the Gambling Capital of the World, as the city currently has the largest strip of land-based casinos in the world.



PROFESSIONAL SPORTS ORGANIZATIONS



Las Vegas Golden Knights of the National Hockey League (NHL)

The Vegas Golden Knights are a professional ice hockey team based in the Las Vegas metropolitan area. The team began play in the 2017–18 NHL season, and is a member of the Pacific Division of the Western Conference of the National Hockey League (NHL). The team is owned by Black Knight Sports & Entertainment and plays its home games at T-Mobile Arena on the Las Vegas Strip.

Las Vegas Raiders of the National Football League (NFL)

The Oakland Raiders are a professional American football franchise based in Oakland, California. The Raiders compete in the National Football League (NFL) as a member club of the league's American Football Conference (AFC) West division. NFL team owners voted nearly unanimously to approve the Raiders' application to relocate from Oakland to Las Vegas, Nevada, in a 31-to-1 vote at the annual league meetings in Phoenix, Arizona, on March 27, 2017. The Raiders plan to remain in Oakland through 2018 – and possibly 2019 – and relocate to Las Vegas in either 2019 or 2020, depending on the completion of the team's planned new stadium.

Las Vegas Lights FC of the United Soccer League

Las Vegas Lights FC is an expansion team for the United Soccer League (USL) based in Las Vegas, Nevada to begin play in 2018. The team will play its home games at Cashman Field. The team name was selected by a user poll from a list of six candidates. Founded by Las Vegas resident Brett Lashbrook & his family,

Las Vegas Aces of the Women's National Basketball Association (WNBA)

The Las Vegas Aces are a professional basketball team based in Las Vegas, Nevada, playing in the Western Conference in the Women's National Basketball Association (WNBA). The team was founded in Salt Lake City, Utah, as the Utah Starzz before the league's inaugural 1997 season began; then moved to San Antonio, Texas before the 2003 season and became the San Antonio Silver Stars, then simply the San Antonio Stars in 2014; then relocated to Las Vegas before the 2018 season. The team is owned by MGM Resorts International and will play their games at Mandalay Bay Events Center.

PUBLIC & PRIVATE EDUCATION

CLARK COUNTY SCHOOL DISTRICT (CCSD)

The Clark County School District (CCSD) was established in 1956. CCSD is the fifth largest school district in the country, with more than 320,000 students enrolled in kindergarten through 12th grade. The district encompasses more than 350 schools and approximately 8,000 square miles. It is a minority majority student district. CCSD is also the largest employer in the state, with more than 42,000 employees.

CCSD is governed by seven Board of Trustees who represent different geographic regions within the county. Their mission is to ensure "all students progress in school and graduate prepared to succeed and contribute in a global diverse society".

For a complete of Schools please visit the CCSD website at www.ccsd.edu

ENROLLMENT

In order to enroll students :

- Must have proof of immunizations before classes begin.
- Parents enrolling a child in a District School for the first time must have I D, child's social security number, and two forms of proof of address. Child I D's can be original birth certificate, baptismal certificate or passport . Copies are NOT accepted. Proof of address can be a recent utility bill, rent receipt, residence lease or sales contract. Telephone or cable bills and driver's licenses are NOT accepted as proof .
- All students who are transferring from another school district require transcripts or report cards from the previous school attended.

AGE REQUIREMENTS

School Attendance is required for children 7 to 17 years of age mandated by Nevada State Law. Students about to enter 1st grade must have attended a state approved kindergarten program or take a developmental assessment test. A child must be 5 years old on or before Sept. 30th to attend kindergarten and 6 years old on or before Sept. 30th to attend 1st grade .

BUS SERVICES

Students who live more than 2 miles from zoned schools are eligible for bus transportation. Those who are eligible must fill out an application requesting the service. They are available through the School District. Bus times and route schedules can be obtained through your child's school. NOTE: Students with zone variances will not be bused. Parents will be responsible for the child's transportation to and from school.

IMMUNIZATIONS

Nevada Law requires students to have these immunizations prior to the start of class.

- 4 DPT shots (one more if last dose was before 4th birthday)
- 3 Polio shots (one more if last dose was before 4th birthday)
- 2 MMR shots (one dose must be given before the 1st birthday the second given between kindergarten and 1st grade)

Adult Education	702-799-8650
Career and Technical Education	702-799-8462
FACES (parent resources)	702-799-0303
Food Service	702-799-8123
Job Hotline	702-799-5252
Magnet Schools	702-799-8492
School Police Dispatch (Crime Reporting)	702-799-5411
Transportation	702-799-8110
Zoning	702-799-6430

The Clark County School District website offers an interactive tool to locate your child's potential school. Please visit the website below and simply enter your residence address to locate the proper schools.

<http://www.ccsd.net/schools/zoning/search/>



CHARTER & PRIVATE SCHOOLS

Charter/Private School

100 Academy of Excellence
American Preparatory Academy
Andre Agassi College Preparatory Academy
Beacon Academy of Nevada - Online
Coral Academy of Science Las Vegas
Discovery Charter School
Doral Academy
Explore Knowledge Academy
Founders Academy
Imagine School at Mountain View
Innovations International Charter School of Nevada
Leadership Academy - Online
Mater Academy of Nevada
Nevada Connections Academy - Online
Nevada State High School
Nevada Virtual Academy - Online
Odyssey Charter Schools - Blended Online
Pinecrest Academy
Quest Academy Preparatory Education
Rainbow Dreams Academy
Silver Sands Montessori Charter School
Somerset Academy of Las Vegas
Sports Leadership & Management Academy
The Delta Academy - Online and Traditional

Website

www.100academy.org
www.americanprep.org
www.agassiprep.net
www.banv.org
www.caslv.org
www.dcslv.org
www.doralacademynv.org
www.ekacademy.org
www.foundersacademylv.com
www.imaginemountainview.org
www.iicsn.org
www.lanv.org
www.materacademynv.org
www.connectionsacademy.com
www.earlycollegenv.com
www.nvva.k12.com
www.odysseyk12.org
www.pinecrestnv.org
www.questlv.com
www.rainbowdreamsacademy.com
www.silversandsmcs.org
www.somersetacademyoflasvegas.com
www.slamnv.org
www.deltaacademylv.com

NATIONAL PARKS & RECREATION AREAS

Southern Nevada offers several National Parks in the area that you will want to explore and discover for yourself. Year-round these parks are a marvel of nature and provide some breathtaking vistas that make for some great photos.

Listed below are names of some National Parks that are located in the area.

- Death Valley National Park
- Grand Canyon National Park
- Great Basin National Park
- Hoover Dam
- Lake Mead National Recreation Area
- Mt. Charleston
- Red Rock National Conservation Area
- Valley of Fire



LAKE MEAD

Measuring 110-miles long, with a surface area of 274 square miles, the lake has more than 500-miles of shore for the thousands who, each day, boat, swim, water ski, hike and fish it. Access off Interstate 15 in Nevada; U.S. Highways 93 and 95 in Nevada and Arizona. Lake Mead National Recreation Area is located about 30 miles south of Las Vegas via U.S. Highway 93.

The lake and surrounding area boasts five developed beaches and marinas with campgrounds and other services, including Overton Beach, Echo Bay, Callville Bay, Las Vegas Bay, Temple Bar and Boulder Beach. Boating of all kinds and personal water craft use are popular within Lake Mead NRA. Waterskiing is a favorite activity on the broad expanses of open water, along with kayaking and canoing.

Of course, swimming is a major form of water recreation during summer months when lake temperatures warm into the 80-degree range. No lifeguards are present. Fishing enthusiasts can find some excellent sport fishing at Lake Mead, including varieties like largemouth bass, rainbow trout, striped bass, channel catfish, black crappie and bluegill.

Only a few designated trails exist in the park, allowing those with experience to go out and explore on their own with the help of detailed maps and instructions to the most popular areas. The designated trails range from 0.5 to 1.25 miles. Short desert hikes lead to places you will never see from a boat or car. One such place is the area of colorful sandstone formations near Red stone Picnic Area along Northshore Road. Another is a canyon where Indian petroglyph were carved in a rock wall hundreds of years ago.

There are eight camping sites at Lake Mead - Boulder Beach, Hemingway, Las Vegas Bay, Katherine, Echo Bay, Callville Bay, Temple Bar and Cottonwood Cove. There are also six RV campgrounds with hookups. Paddlers can take two river trips, one runs from Hoover Dam south through Black Canyon on Lake Mohave; the other begins in upper Lake Mead and explores the western gorges of the Grand Canyon

HOOVER DAM

Hoover Dam is 727 feet high, 1,244 feet long, 660 feet thick at the base, and 45 feet thick at the crest. It weighs 5,500,000 tons and contains 3,250,000 cubic yards of concrete. Located 30 miles south east of Las Vegas on State Highway 93. A 400 passenger parking garage is adjacent to the Visitor Center. Hoover Dam Visitor Center is open every day of the year except for Thanksgiving and Christmas from 9 a. m. to 5 p.m. There is an admission fee to enter.

Your admission fee entitles you to the use of all facilities and services, which include: 35 minute guided tour, 25 minute historic film, exhibit hall and scenic overlook. For Tour Reservations call 702-293-8367.

The tour through the dam and power plant is 1/2 mile and lasts for approximately 35 minutes. The tour is fully accessible and wheelchairs are available. You start the tour by descending 520 feet power plant. The tour is not recommended for those who suffer from claustrophobia or for those use pacemakers or defibrillators.

For more information go to the Hoover Dam website at <http://www.hooverdam.com>



RED ROCK

The Red Rock Canyon National Conservation Area is located 20 miles west of Las Vegas. Within the boundaries of the 197,000-acre area is a 13-mile scenic drive, many miles of hiking trails, picnic areas and a visitors center with an exhibit room and bookstore.

Red Rock's most significant geological feature is the Keystone Thrust Fault. About 65 million years ago, two of the Earth's crustal plates collided with such force that part of an older plate of grey limestone was thrust up and over the younger red sandstone. The fault extends from the Cottonwood Fault north to the vicinity of La Madre Mountain. The 13-mile scenic drive is a one-way road that also allows bicycle traffic. Sightseeing and hiking trails can be accessed from the parking areas on the side of the road. The scenic drive is open daily from 7 a.m. to 8 p.m. The entry fee is \$5 per carload, and you can also purchase a \$20 pass that will last you 12 months. Entrance is free for those who walk or ride their bicycles through the gate. Golden Age, Golden Access and Golden Eagle Passes are all valid at Red Rock. Bicycles are permitted only on designated roads and trails. The BLM advises cyclists to wear helmets, bright clothing, carry water, obey traffic laws and pay attention to drivers who may be distracted.

LOCAL GOLF COURSES

Angel Park Golf Club – 702-254-4653
100 S. Rampart Blvd., Las Vegas, NV 89128
Number of holes: 18,18,9 • Course type: Public

Anthem Country Club – 702-914-7888
25 Anthem Dr., Henderson, NV 89012
Number of holes: 18 • Course type: Private

Badlands Golf Club – 702-363-0754
9119 Alta Dr., Las Vegas, NV 89128
Number of holes: 27 • Course type: Public

Bali Hai Golf Club – 702-450-8000
Las Vegas Blvd. & Russell Rd., Las Vegas, NV
89119 Number of holes: 18 • Course type: Public

Black Mountain Golf & C C – 702-565-7933
500 Greenway Rd., Henderson, NV 89015 Number
of holes: 18 • Course type: Public

Boulder City Golf Course– 702-293-9236
1 Club House Dr., Boulder City, NV 89005 Number
of holes: 18 • Course type: Public

Taylor Made Golf Center – 702-896-4100
6730 Las Vegas Blvd. South, Las Vegas, NV 89119
Number of holes: 9 • Course type: Public

Canyon Gate Country Club – 702-363-0303 2001
Canyon Gate Dr., Las Vegas, NV 89117 Number of
holes: 18 • Course type: Private

CasaBlanca Resort Golf Course – 702-346-7529
950 W. Mesquite Blvd., Mesquite, NV 89027
Number of holes: 18 • Course type: Public

Craig Ranch Golf Course – 702-642-9700
628 W. Craig Rd., Las Vegas, NV 89030
Number of holes: 18 • Course type: Public

Dragonridge Country Club – 702-614-4444
552 S. Stephanie St., Henderson, NV 89052
Number of holes: 18 • Course type: Private

Desert Inn Golf Club – 702-733-4290
3145 Las Vegas Blvd. South, Las Vegas, NV 89109
Number of holes: 18 • Course type: Public

Desert Pines Golf Club – 702-450-8000
3415 E. Bonanza Rd., Las Vegas, NV 89101
Number of holes: 18 • Course type: Public

Desert Rose Golf Course – 702-431-4653
5483 Club House Dr., Las Vegas, NV 89142
Number of holes: 18 • Course type: Public

Desert Willow – 702-263-4653
2020 W. Horizon Ridge Pkwy., Henderson, NV
89012 Number of holes: 18 • Course type: Public

Eagle Crest Golf Club – 702-240-1320
2203 Thomas Ryan Blvd., Las Vegas, NV 89134
Number of holes: 18 • Course type: Semi-Private

Emerald River Golf Course – 702-298-0061
1155 Casino Dr., Laughlin, NV 89029
Number of holes: 18 • Course type: Public

Highland Falls Golf Club – 702-254-7010
10201 Sun City Blvd., Las Vegas, NV 89134
Number of holes: 18 • Course type: Public

Las Vegas Country Club – 702-734-1122
3000 Joe W. Brown Dr., Las Vegas, NV 89109
Number of holes: 18 • Course type: Private

Las Vegas Golf Club – 702-646-3003
4300 W. Washington Ave., Las Vegas, NV 89017
Number of holes: 18 • Course type: Public

Las Vegas National Golf Club – 702-734-1796
1911 E. Desert Inn Rd., Las Vegas, NV 89109
Number of holes: 18 • Course type: Public

Las Vegas Paiute Resort – 702-658-1400
10325 Nu-Wav Kaiv Blvd., Las Vegas, NV 89124
Number of holes: 54 • Course type: Public

Los Prados Country Club – 702-645-5696
5150 Los Prados Cir., Las Vegas, NV 89130
Number of holes: 18 • Course type: Public

Mojave Resort Golf Club – 702-535-4653
9905 Aha Macav Pkwy., Laughlin, NV 89029
Number of holes: 18 • Course type: Public





North Las Vegas Golf Course – 702-633-1833
324 E. Brooks Ave., Las Vegas, NV 89030
Number of holes: 9 • Course type: Public

Oasis Golf Course – 888-367-3386
100 Palmer Lane, Mesquite, NV 89027
Number of holes: 27 • Course type: Semi-private

Painted Desert Golf Club – 702-645-2570 5555
Painted Mirage Way, Las Vegas, NV 89129
Number of holes: 18 • Course type: Public

Palm Valley Golf Course – 702-363-4373 9201-
B Del Webb Blvd., Las Vegas, NV 89134
Number of holes: 18 • Course type: Public

Palms Golf Course – 800-621-0187
2200 Hillside Dr., Mesquite, NV 89024
Number of holes: 18 • Course type: Public

Primm Valley Golf Course – 702-679-5510
I-15 at Cal. NV. State Line
Number of holes: 36 • Course type: Public

Red Rock Country Club – 702-304-5666
2250 Red Springs, Las Vegas, NV 89135
Number of holes: 18,18 • Course type: Private

Reflection Bay – 702-740-4653
75 Monte Lago Blvd., Henderson, NV 89011
Number of holes: 18 • Course type: Public

Rhodes Ranch Golf Club – 702-740-4114
20 Rhodes Ranch Pkwy., Las Vegas, NV 89148
Number of holes: 18 • Course type: Public

Rio Secco Golf Club – 702-889-2400
2851 Grand Hills Dr., Henderson, NV 89052
Number of holes: 18 • Course type: Public

Royal Links Golf Club – 702-450-8000
5995 E. Vegas Valley Blvd., Las Vegas, NV 89122
Number of holes: 18 • Course type: Public

Shadow Creek Golf Club – 702-791-7161
3 Shadow Creek Dr., North Las Vegas, NV 89031
Number of holes: 18 • Course type: Private

Siena Golf Club – 702-341-9200
10575 Siena Monte Ave., Las Vegas, NV 89135
Number of holes: 18 • Course type: Public

Southern Highlands Golf Club – 702-263-1000
1 Robert Trent Jones Lane, Las Vegas, NV 89141
Number of holes: 18 • Course type: Private

Spanish Trail Country Club – 702-364-5050
5050 Spanish Trail Lane, Las Vegas, NV 89113
Number of holes: 9,9,9 • Course type: Private

Stallion Mountain Country Club – 702-450-8000
5500 E. Flamingo Rd., Las Vegas, NV 89122
Number of holes: 54 • Course type: Private

The Legacy Golf Club – 702-897-2187
130 Par Excellence Dr., Henderson, NV 89014
Number of holes: 18 • Course type: Public

The Revere at Anthem - 702-259-4653
2600 Hampton, Henderson, NV
89052
Number of holes: 18 • Course type: Public

TPC at Summerlin – 702-256-0111
1700 Village Center Dr., Las Vegas, NV 89134
Number of holes: 18 • Course type: Private

TPC at the Canyons – 702-256-2000
9851 Canyon Run Dr., Las Vegas, NV 89136
Number of holes: 18 • Course type: Public

Wildhorse Golf Club – 702-434-9000
2100 West Warm Springs Rd., Henderson, NV
89014
Number of holes: 18 • Course type: Public

Wolf Creek – 866-252-4653
401 Paradise Pkwy., Mesquite, NV 89024
Number of holes: 18 • Course type: Public

HOSPITALS & MEDICAL CENTERS

SUNRISE HOSPITAL & MEDICAL CENTER

3186 S. Maryland Pkwy, Las Vegas, NV 89109
702-731-8000

UNIVERSITY MEDICAL CENTER

1800 W Charleston Blvd, Las Vegas, NV 89102
702-383-2000

VALLEY HOSPITAL & MEDICAL CENTER

620 Shadow Lane, Las Vegas, NV 89106
702-388-4000

MONTEVISTA HOSPITAL

5900 W. Rochelle Ave, Las Vegas, NV 89103
702-364-1111

ST. ROSE DOMINICAN HOSPITALS

Rose de Lima Campus

102 E Lake Mead Dr. Henderson, NV 89015
702-616-5000

Siena Campus

3001 St. Rose Pkwy. Henderson, NV 89052
702-616-5000

San Martin Campus

8280 W. Warm Springs, Las Vegas, Nevada 89113
702-492-8000

HENDERSON HOSPITAL

1050 W Galleria Drive, Henderson, Nevada 89011
702-963-7000

LAKE MEAD HOSPITAL & MEDICAL CTR.

1409 E Lake Mead Blvd, N. Las Vegas, NV 89030
702-649-7711

SPRING VALLEY HOSPITAL

5400 S. Rainbow Blvd, Las Vegas, NV 89118
702-853-3000

SOUTHERN HILLS HOSPITAL

9300 W Sunset Rd, Las Vegas, Nevada 89148
702-916-5000

DESERT SPRINGS HOSPITAL

2075 E Flamingo Rd., Las Vegas, NV 89119
702-733-8800

MOUNTAIN VIEW HOSPITAL

3100 N Tenaya, Las Vegas, NV 89129
702-255-5000

SUMMERLIN HOSPITAL & MEDICAL

657 Town Center Las Vegas, NV 89134
702-233-7000

CENTENNIAL HILLS HOSPITAL

6900 N Durango Dr, Las Vegas, Nevada 89149
702-835-9700

BOULDER CITY HOSPITAL

901 Adams Blvd., Boulder City, NV 89005
702-293-4111



COMMUNITY CENTERS & ACTIVITIES

YOUTH ORGANIZATIONS

YMCA of Southern Nevada – 702-877-9622

The YMCA offers a wide variety of activities through-out the year as well as day camps, youth leagues, and swimming lessons.

Boy Scouts of America – 702-736-4366

Boy Scouts help promote leadership training and strong values through several activities.

Frontier Girl Scouts Council

Promotes outreach programs with focus on in school and after school activities, violence intervention and at risk teens.

Boys & Girls Club – 702-367-2582

Many activities include help with homework, computer instruction, game clubroom activities, teen focus ed ac activities / mentoring and a wide variety of sports.

City of Las Vegas Beyond The Neon – 702-229-6297

Several sports and programs designed for all ages.

Nevada Youth Football League – 702-463-5417

The largest football league in the city of Las Vegas and in the state of Nevada, that provides 7 to 14 year olds the opportunity to play organized sports and to learn important lessons at an early age. www.gonyfl.com

Las Vegas Heat Track Club – www.lasvegasheat.org

The Las Vegas Heat has a well-rounded program that emphasizes education, teaches responsibility, leadership, discipline, volunteering, and builds self-esteem in the athletes.

RECREATION CENTERS

Southern Nevada offers different recreation activities through out the valley. Each of the municipal cities has dedicated vast resources provided parks, dogs parks, senior centers, community centers, and sports complexes that are available for public use. The websites below will direct

CITY OF LAS VEGAS

www.lasvegasnevada.gov

HENDERSON

www.cityofhenderson.com/parks-and-recreation/home

NORTH LAS VEGAS

<http://www.cityofnorthlasvegas.com>

BOULDER CITY

www.bcnv.org/237/Parks-Recreation



SENIOR CENTERS

West Flamingo Senior Center
6255 W Flamingo Rd
702-455-7742

Cambridge Center
3900 Cambridge St
702-455-7169

Whitney Senior Center
5712 Missouri Ave
702-455-7560

The Derfelt Center in Lorenzi Park
3343 W. Washington Ave.
702-229-6601

Doolittle Satellite Senior Center
1950 N. J St.
702-229-6125

Howard Lieburn Senior Center
6230 Garwood Avenue
702-229-1600

Heritage Park Senior Facility
300 S Racetrack Rd
702-267-2950

Las Vegas Senior Citizens Center
451 E. Bonanza Road
702-229-6454

Clark County Senior Center
330W Washington Avenue
702-647-3307



DEPARTMENT OF MOTOR VEHICLES

Items Needed for License & Registration Transfers

Your Valid, State-Issued Drivers License

This must contain your name and date of birth.
If your license is expired, suspended or revoked, call to determine what you need to do.

Proof of Your Social Security Number

If your social security number is not printed on your drivers license, you will need to bring your social security card.

Nevada Liability Insurance Card

Out of state insurance is not acceptable.
Make sure the name(s) on your insurance and registration match exactly.

Smog Check Certificate if Needed

Exemptions include vehicles based in rural areas, motorcycles, vehicles older than 1968, alternative fuel vehicles and new vehicles registered less than two years.

Your Current Registration Slip(s)

Nearly all trailers must be registered and titled.

Title(s), Unless Held By Lienholder

You have the option of retaining your out-of-state title. We strongly suggest getting a Nevada title if possible.

VIN Check(s)

Vehicle Identification Number inspections are done at DMV offices. In Las Vegas, drive to the inspection station outside the main office first.

Your Out-of-State License Plates

Bring them into the office with you.

Fees—Cash, Check, Money Order, Visa, MC

Call us with your VIN for an estimate of registration fees, which are partially based on vehicle value.

Driving Tests

All applicants take a vision test. Other tests will be waived if:

- You are age 25 or older and have no special restrictions.
- Your out-of-state license is valid and you are applying for the same class of license.
- You have no more than 2 moving violations and no suspensions, revocations, cancellations or denials in the past 4 years.

If you do not meet these requirements, you will have to take a written test and a skills test. License applications are checked with the national Problem Driver Pointer System. Special license, testing and endorsements are required to tow multiple trailers or trailers in excess of 10,000 pounds.

Motor Voter

Register to vote while applying for your drivers license.

Handicapped Parking

Nevada issues a placard which can be used on any vehicle or special license plates. The disabled resident must obtain a DMV application and have it signed by a licensed physician. Placards are also available for short-term disabilities.

Personalized/Specialty License Plates Personalized plates are limited to 7 letters and/or numbers. Specialty plates are available for Nevada universities, veterans, Purple Heart recipients, Ex Prisoners of War, classic cars and a number of special groups and charitable causes.

Motorcycles & Mopeds

Motorcyclists are required to wear helmets and possess a Class M license. Nevada transfers most motorcycle endorsements. Mopeds 50cc or less, with less than 2 horsepower, do not have to be registered and you do not need a Class M license. However, you must have a valid Class C or higher license.

Boats

Water vessels are registered with the Nevada Division of Wildlife. Call 486-5127. Trailers are registered with DMV.

DMV FULL SERVICE OFFICES
DMV INFOLINE: 702-486-4DMV
(702-486-4368)

8250 W. Flamingo • Las Vegas, NV 89147
8 a.m. - 5 p.m. M-F • 8 a.m. - 4 p.m. Sat.

1399 American Pacific • Henderson, NV 89074
8 a.m. - 5 p.m. M-F • 8 a.m. - 4 p.m. Sat.

2701 E. Sahara • Las Vegas, NV 89104
8 a.m. - 5 p.m. M-F • 8 a.m. - 4 p.m. Sat.

7170 N. Decatur • Las Vegas, NV 89131
8 a.m. - 5 p.m. M-F • 8 a.m. - 4 p.m. Sat.



www.dmvstat.com

IMPORTANT PHONE NUMBERS

WATER

LAS VEGAS VALLEY WATER DISTRICT
1001 S. Valley View
Las Vegas, NV 89153
lvvwd.com · (702) 870-2011

NORTH LAS VEGAS WATER DEPARTMENT
2250 Las Vegas Blvd North
North Las Vegas, NV 89030
cityofnorthlasvegas.com · (702) 633-1484

CITY OF HENDERSON WATER
240 S. Water St · Henderson, NV 89015
www.cityofhenderson.com · (702) 267-5900

BOULDER CITY WATER & ELECTRIC
401 California Ave. · Boulder City, NV 89005
www.bcnv.org · (702) 293-9244

**CLARK COUNTY WATER
RECLAMATION DISTRICT**
5857 E. Flamingo Rd · Las Vegas, NV 89122
www.cleanwaterteam.com · (702) 668-8888

AIRPORTS

McCarran International Airport
5757 Wayne Newton Blvd.
702-261-5211

Henderson Executive Airport
1400 Executive Airport Dr.
702-261-4800

North Las Vegas Airport
2730 Airport Dr.
702-261-3806

POWER & NATURAL GAS

NV ENERGY
6226 W. Sahara Ave · Las Vegas, NV 89146
www.nvenergy.com · (702) 402-5555

SOUTHWEST GAS CORPORATION
1374 W. Cheyenne #107
North Las Vegas, NV 89030
www.swgas.com · (877) 860-6020

CABLE, INTERNET & PHONE

COX COMMUNICATIONS
cox.com · (702) 383-4000

CENTURY LINK
centurylink.com · (702) 244-7400

DISH NETWORK
dish.com · (855) 432-0181

DIRECTV
directv.com · (800) 370-3587

TRASH & RECYCLING

**REPUBLIC SERVICES OF SOUTHERN
NEVADA** 770 E. Sahara Ave · Las Vegas, NV
89104
www.republicservicesvegas.com · (702) 735-5151

NEWSPAPERS

Las Vegas Business Press
3335 Wynn Rd. Las Vegas, NV 89102
702-383-0211

Las Vegas Review Journal
1111 W. Bonanza Rd. Las Vegas, NV 89106
702-383-0211

Las Vegas Sun
800 S. Valley View Blvd. Las Vegas, NV 89107
702-385-3111

MOVING CHECKLIST

CHANGE OF ADDRESS

- ~ **Post Office**
- ~ **Bank**
- ~ **Credit card companies**
- ~ **Friends and relatives**
- ~ **Insurance companies** — Life, health, fire, auto
- ~ **Automobile** — Transfer of car title registration, driver's license
- ~ **Utility companies** — Gas, light, water, telephone, cable
- ~ Arrange for any refunds or deposits
- ~ Arrange for service in new location
- ~ **Home delivery** — Laundry, newspaper, magazine subscriptions
- ~ **School records** — Ask for copies or transfer children's school records
- ~ **Medical records** — Medical, dental, prescription histories
- ~ Ask doctor and dentist for referrals
- ~ Transfer needed prescriptions, x-rays, etc.
- ~ **Church, Clubs Civic Organizations** — Transfer memberships and get letters of introduction
- ~ **Pets** — Ask about regulations of pet licenses, vaccinations, tags, etc.

DON'T FORGET TO...

- ~ Empty freezers — Plan use of foods
- ~ Defrost freezer/refrigerator
- ~ Have appliances serviced for moving
- ~ Contact utility companies for connection — Water, power, cable, trash, etc.
- ~ Stay in contact with your mover — Check with the following: insurance coverage, packing and unpacking labor, arrival day, various shipping papers, method and time of expected payment.
- ~ Plan special care and needs of infants, children, pets and potted plants

ON MOVING DAY

- ~ Carry currency, jewelry, documents yourself
- ~ Plan for transporting pets — They can be poor traveling companions if unhappy
- ~ Let a close friend or relative know route and schedule you will travel including overnight stops; use him/her as message headquarters
- ~ Double check old closets, drawers, shelves to be sure they are empty
- ~ Leave extra keys needed by new owner

THE PROPERTY CRITIQUE

ADDRESS: _____

Beds: _____	Pros	Cons
Bath: _____		
Sq. Ft.: _____		
Floorplan: _____		
Living: _____		
Dining: _____		

ADDRESS: _____

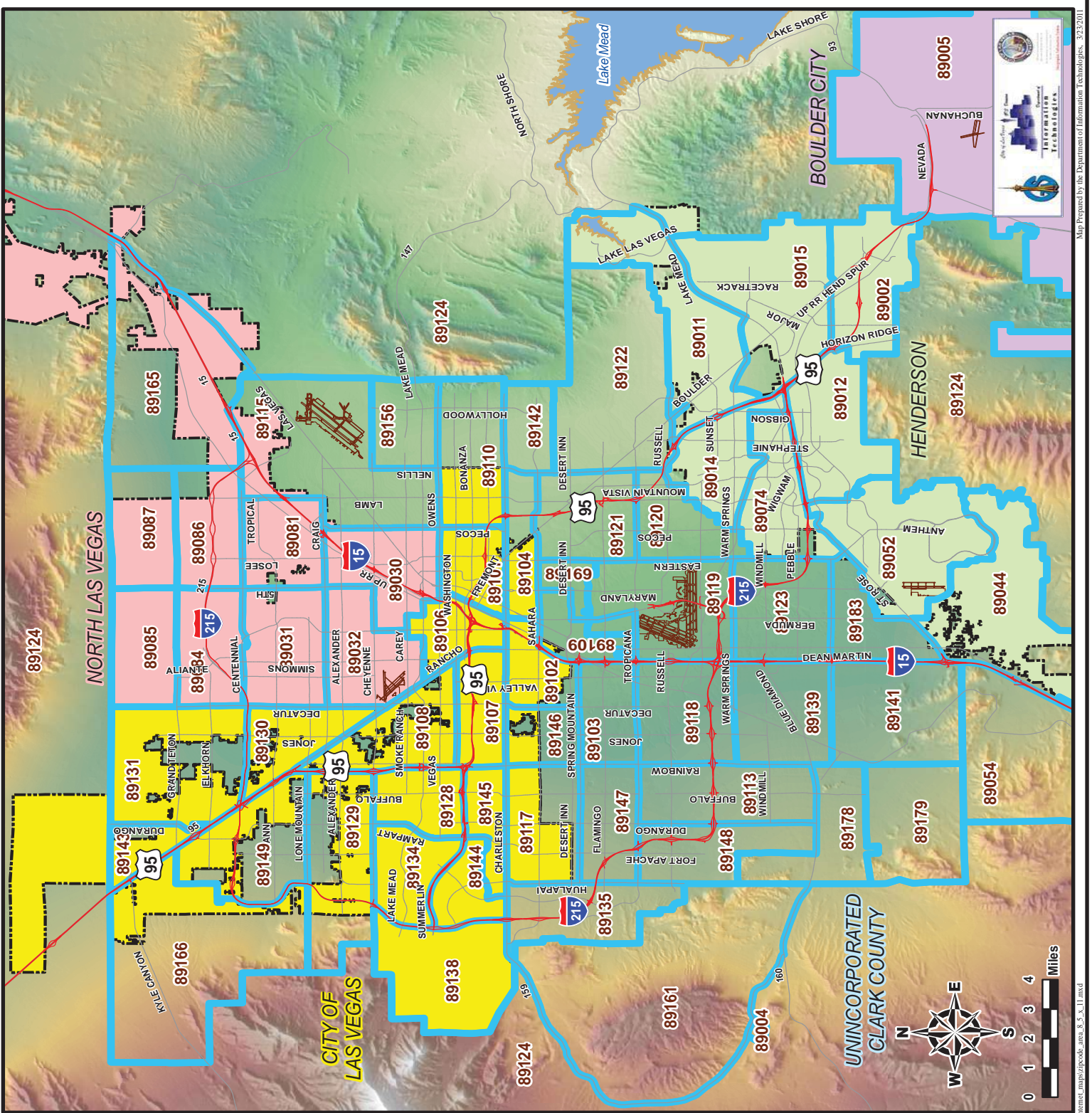
Beds: _____	Pros	Cons
Bath: _____		
Sq. Ft.: _____		
Floorplan: _____		
Living: _____		
Dining: _____		

ADDRESS: _____

Beds: _____	Pros	Cons
Bath: _____		
Sq. Ft.: _____		
Floorplan: _____		
Living: _____		
Dining: _____		

ADDRESS: _____

Beds: _____	Pros	Cons
Bath: _____		
Sq. Ft.: _____		
Floorplan: _____		
Living: _____		
Dining: _____		



- City of Las Vegas
- North Las Vegas
- Henderson
- Boulder City
- Clark County

City Boundaries
 - - - - -

Zip Code Boundaries

LAS VEGAS METRO AREA ZIP CODES





MAIN OFFICE

Phone (702) 432-1111
2475 Village View Drive, Suite 250
Henderson, NV 89074

SEVEN HILLS

Phone (702) 940-5555
3185 St. Rose Parkway, Suite 230
Henderson, NV 89052

SUNSET

Phone (702) 685-3388
8850 W. Sunset Road, Suite 100
Las Vegas, NV 89148

TOWN CENTER

Phone (702) 462-6000
10777 W. Twain Avenue, Suite 105
Las Vegas, NV 89135